

# Aptech Launches EV Lite, a New Cost Effective, Web-Based Operational Reporting Solution for Multi-Property Operators

**EV Lite Automates Data Gathering,  
Delivers Performance Reporting,  
Identifies Exceptions to Increase Profitability**



(Pittsburgh, PA – May 27, 2010) Aptech Computer Systems, Inc., the leading provider of hospitality software for business intelligence and enterprise financial accounting, today announced the release of EV Lite, its new multi-property, graphical performance reporting service that enables hotel operators to gather and display performance data from their properties. EV Lite is built on web-based Microsoft technology and is a cost-effective addition to Aptech's growing list of financial, resource planning, and reporting applications that increase operating efficiency and profitability for hotel companies.

Aptech Vice President Cam Troutman said, "EV Lite collects and delivers property performance numbers in a wide choice of flexible report formats each day so operators can quickly identify exceptions and address them before they become expensive trends." EV Lite is an efficient and economical option for multi-property operators. The product gathers data from multiple properties with different systems and captures it in a flexible reporting tool that enables operators to run their businesses with accurate current numbers.

## **Web-based EV Lite platform lowers costs**

EV Lite is web-based and hosted by Aptech at its secure network facility. This frees operators from system responsibility and hardware costs. Users may access their company's reports using any browser with appropriate password authority. EV Lite can also be configured to automatically email selected reports to approved users to simplify access and decision making.

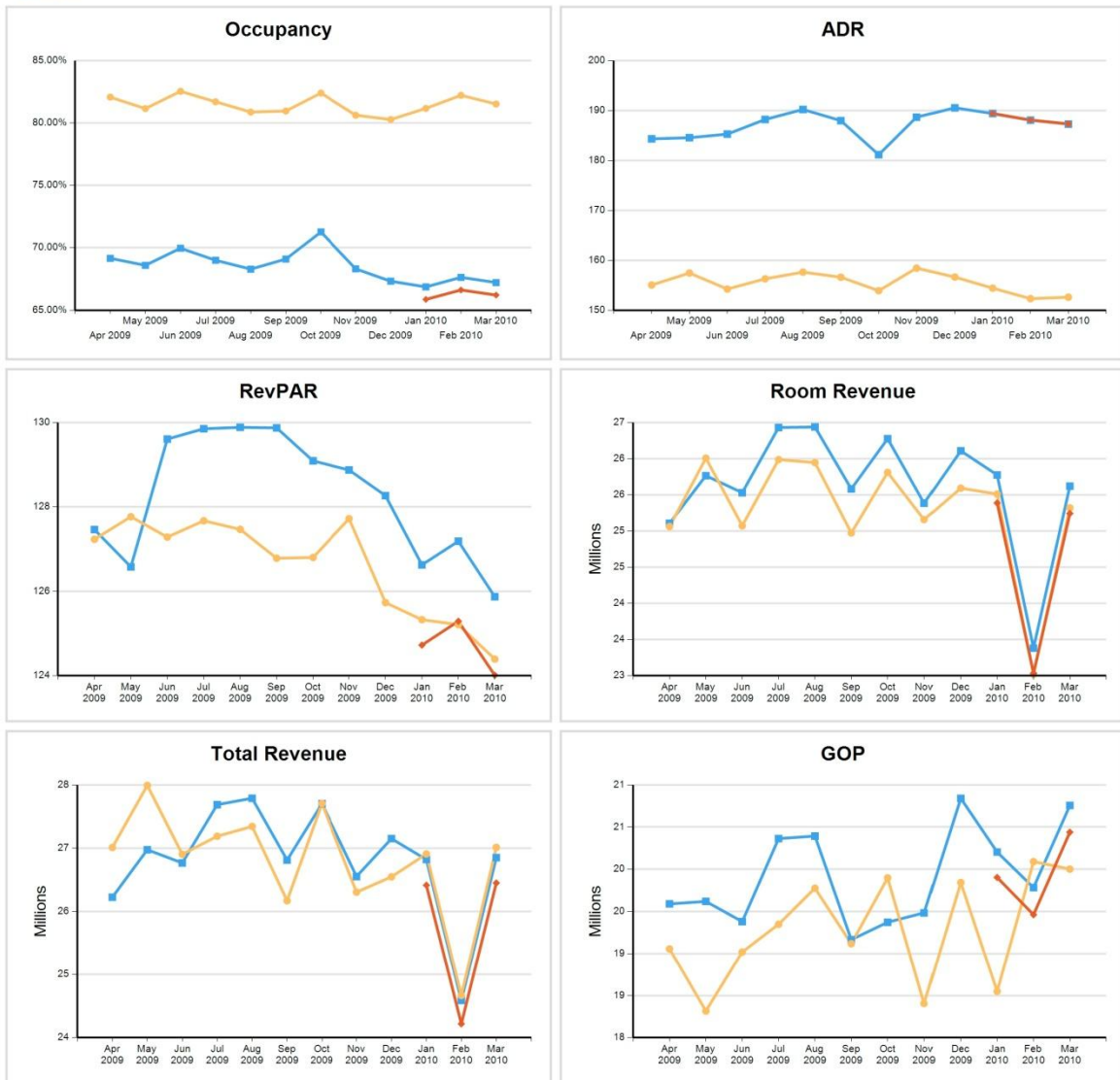
## **Daily property performance information for profitable decisions**

EV Lite's reports encompass all areas of property and company performance management with powerful, easy to use features that include:

- **Daily Data Gathering** – EV Lite gathers performance data on a daily basis from hotels regardless of the brand or the data source system. This eliminates the need for staff to manually re-key their individual data.
- **Customized Reports** – Pre-configured and customized reports compare budget with actual results for date ranges, properties, regions, and with MTD and annualized figures to simplify all areas of performance evaluation. EV Lite delivers drill down function that pinpoints specific sources of data, such as rooms sold, ADR and RevPAR.
- **Multiple Views** – EV Lite's graphical reporting capability enables users to generate reports in different views – for example, revenues of all hotels, revenues of all hotels by brand, revenues of hotels with less than 100 rooms.
- **Web-based SaaS Platform** – EV Lite is securely hosted by Aptech and may be accessed from any browser with password authority. This enables company executives and property managers to review the appropriate data and reports anywhere to increase productivity.



**KPI Analysis**  
Last 12 Months  
All Properties



■ Actual    ● Budget    ◆ Prior Forecast

“A leading multi-property hotel company is using EV Lite now with excellent results,” said Troutman. “The system’s Microsoft data warehouse platform is solid and Aptech’s comprehensive hospitality reporting is based on more than 30 years of experience in the industry to deliver the most relevant information to operators in easy to understand, actionable formats. EV Lite is the ideal solution for operators who would benefit from a hospitality-focused multi-property financial reporting platform.”

**About Aptech Computer Systems**

Aptech Computer Systems, Inc., based in Pittsburgh, Pennsylvania, leads the hospitality industry in leveraging change by valuing human relationships and applying technology to solve business problems for people. Incorporated in 1970, Aptech is a financial and operations technology solutions and service company whose products include state-of-the-art back office, business intelligence, and enterprise planning products.

